

Alle terre antiche

6014

Davide Pancetti - 2014

per pianoforte (o chitarra elettrica)

● = ~~A~~ C#

Ed. = possibile risonanza per tutto il brano. e riverbero se possibile.

The image shows a handwritten musical score for the piece "Alle terre antiche". The score is written on ten staves, labeled A through J. Each staff contains a sequence of notes, primarily half notes and quarter notes, with some rests. The notes are often marked with a circled 'x' or a sharp sign (#). The notation is simple and appears to be a sketch or a preliminary draft. The paper is aged and shows some wear.

Handwritten musical notation on two staves. The top staff begins with a treble clef and a key signature of one flat (B-flat). The bottom staff begins with an alto clef and a key signature of one flat. Both staves contain a sequence of notes, with the bottom staff ending in a double bar line and the word "Fine." written to the right.

N° Repertorio SIAE: 18140054600

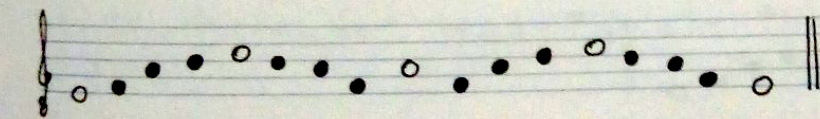
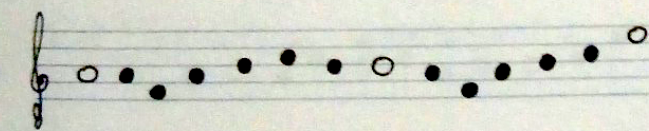
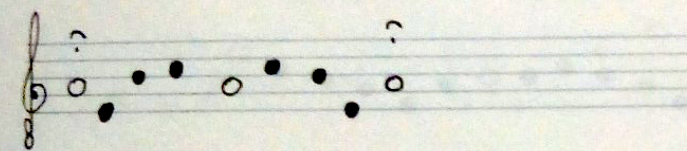
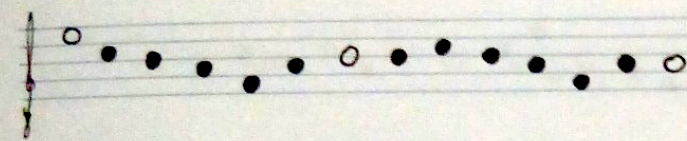
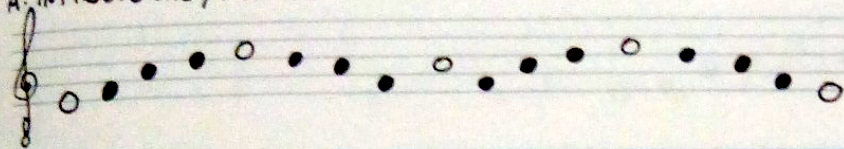
Il sogno di Achille

a Francesco Cristofari, per accompagnare la recitazione dell'omonimo testo da lui scritto e
come brano da concerto a lui dedicato.
PER LYRA, ARPA o PIANOFORTE (acdi elettrico)

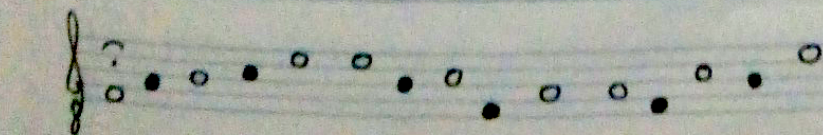
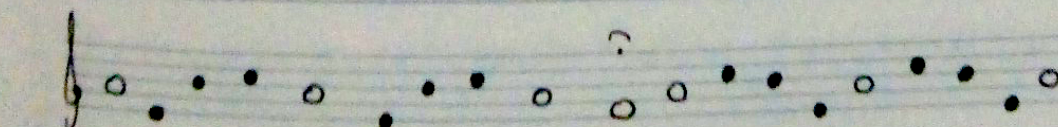
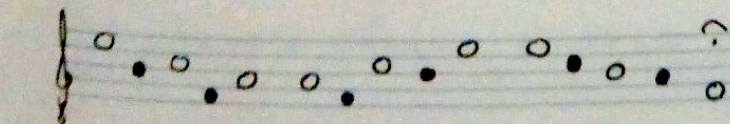
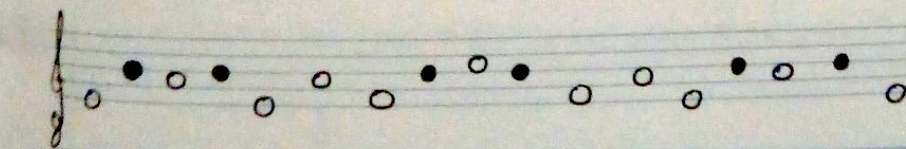
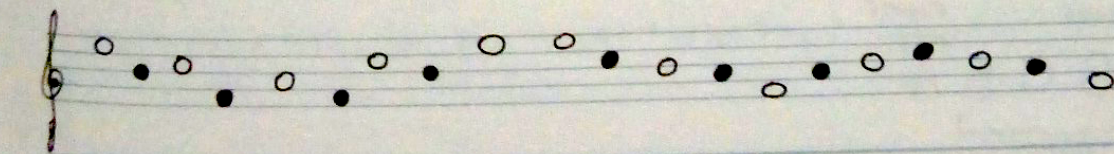
♩: ca 60

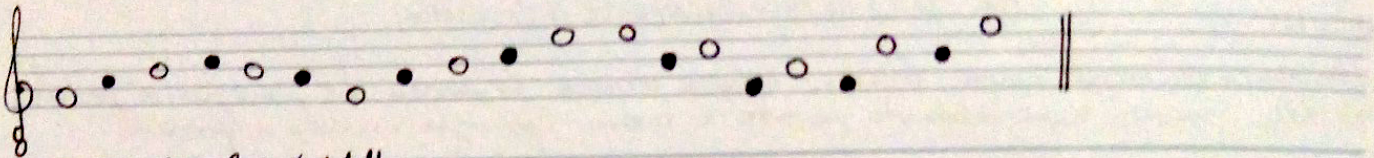
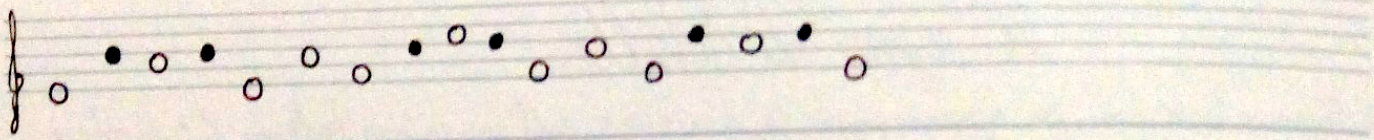
con smorzore nessun suono, lasciare sempre u'breve lo ardo. Al piano forte pedale
(Ped.) della risonanza sepe deborato per tutto il brano. Aggiungee riverbero se possibile.

A: INTRODUZIONE / FINALE

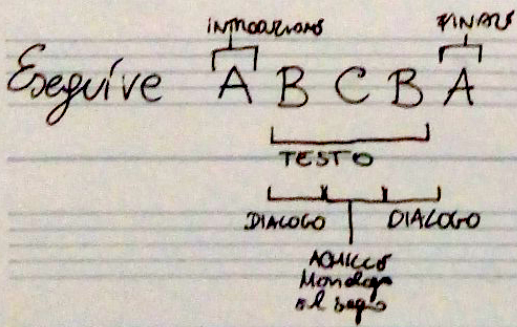
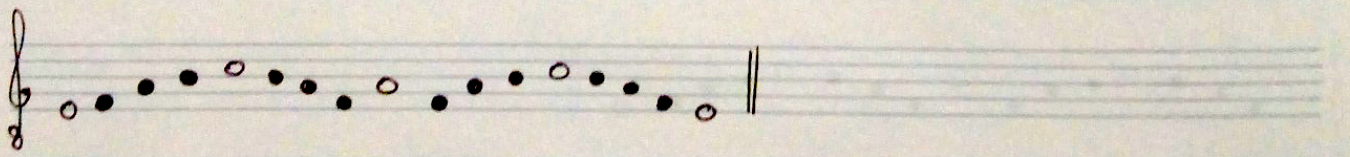
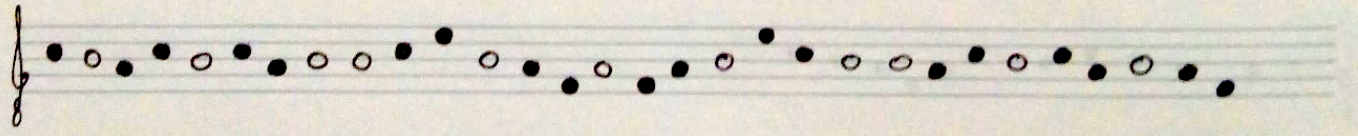
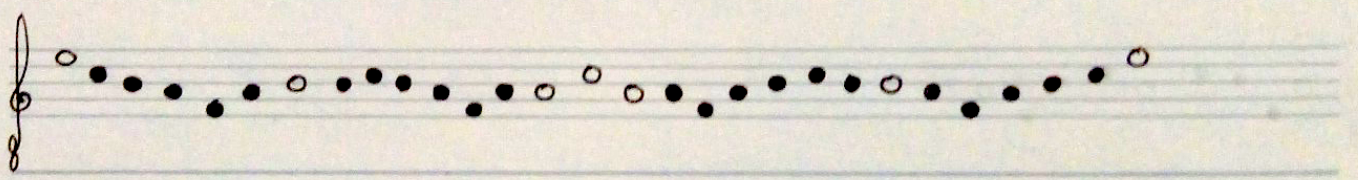
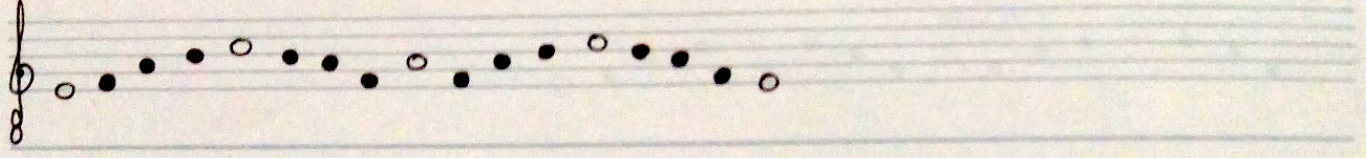


B: DIALOGO 1 e 2





C: IL SOGNO (Monologo di Adelle)



Ningal alle porte di Ur

LARGHIMO

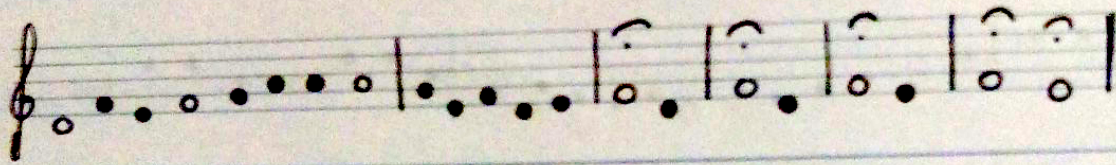
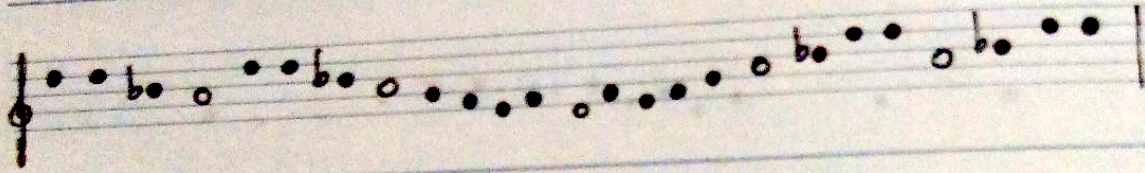
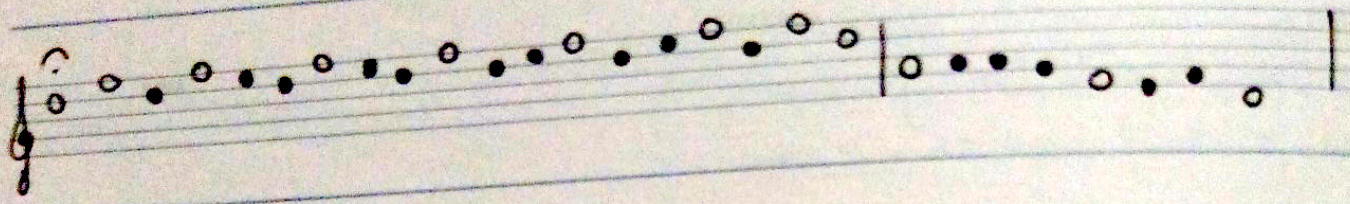
1019

♩ = 60 ca.

Per pianoforte (onde elettrico)

Zed = per tutto il brano con riverbero

The image shows a handwritten musical score on ten staves. The notation is a form of musical shorthand, likely a simplified system of notes and rests. The first staff begins with a treble clef and a common time signature. The notes are represented by small circles, some with stems, and some with accidentals (sharps and flats). The score is divided into measures by vertical bar lines. The overall style is that of a personal manuscript or a composer's sketch.



N° Repertorio SIAE: 18140054800